



August

Week of 7/30-8/12

Focus: Community

8/5-8/19

Focus: Practicing Kindness

8/12-8/16

Focus: Act Responsibly

8/18-8/23

Focus: Work Hard

8/26-8/30

Focus: Serve Others



Q & A

What is a morning meeting?

Morning Meeting, found within Responsive Classroom, is an engaging way to start each day, build a strong sense of community, and set children up for success socially and academically. Each morning, students and teachers gather together in a circle for twenty to thirty minutes and interact with one another during four purposeful components. Our Compass Community Schools network added a 5th component with emotional regulation so that teachers/staff are more aware of how scholars are doing daily when entering school. You can find the 5 components (with details) on slides 3-8.

How long does it take to plan?

I block out time on Monday to make sure that the deck for the following week is ready to go. That includes providing the previous week's attendance to make sure that is being celebrated as well. I would say it takes a max of 20 minutes to get all the materials/slides prepared.

Where do I find my materials?

1. I go to slidesgo.com to pick our theme deck for the month.
 2. Make your usual weekly deck and prep the Monday information for the school wide morning meeting.
 3. These are all stored within google drive on my campus and shared from there. Teachers are able to access them at any time there.
- **Remember, make them a viewer so that they can make a copy and your beautiful Monday Morning Meeting still goes forth.**

How do I plan it?

I usually base what I plan on a few things: 1) What needs to be celebrated? 2) Are there any "broken windows" that we want to address? The answer to both of those questions brings back the theme of the morning meeting for Monday. I want to make sure it is intentional, creates a shared experience, and scholars feel like they may have learned something they had in common with someone else.

The Ideal Morning Meeting /Advisory

1. Greeting
2. Emotional Regulation & Literacy
3. Student-to-Student
4. Group Activity
5. Daily Debrief



1. Meaningful Message



What

4-5 Sentence Note reviewed with the class

How

The positive message should be responsive and hopeful for the day

Why

Research supports a written salutation as a best practice because it welcomes students and informs them what to expect for the day. This also is the way we incorporate Values Based Character Education (VBCE) in our classrooms.

Citations: Shields-Lysiak, L. K., Boyd, M. P., Iorio Jr., J. P., & Vasquez, C. R. (2020). Classroom Greetings: More than a Simple Hello. *Iranian Journal of Language Teaching Research*, 8(3), 41-56.



2. Greeting



What

A routine that ensures that **EVERY STUDENT** is acknowledged and welcomed.

How

Develop a few rituals with explicit instructions that students understand (routine but not procedural).

Why

When teachers actively make time for social practices like greetings, students are more likely to participate in “constructing feelings, values, and knowledge as they cultivate a dialogic relation with learning”.

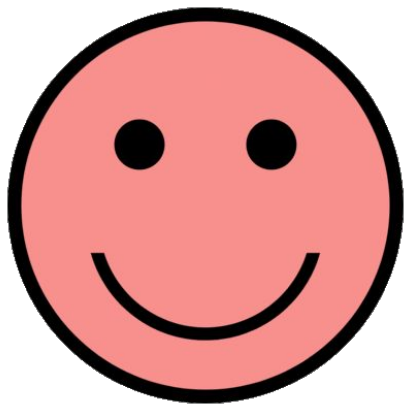


Citations:

- Shields-Lysiak, L. K., Boyd, M. P., Iorio Jr., J. P., & Vasquez, C. R. (2020). Classroom Greetings: More than a Simple Hello. *Iranian Journal of Language Teaching Research*, 8(3), pg 54.
- Advisory Implications: Wood, C. (2017). *Yardsticks: Child and Adolescent Development Ages 4 - 14* (4th ed.). Center for Responsive Schools. pp. 149-173.



3. Emotional Literacy & Regulation



What

A routine that provide space for students to express feelings

How

Use tools and protocols that help students learn to express how they are and enable you to co-regulate with them.

Why

There is an ample amount of research that shows that emotions affect attention and memory, both of which undermine our ability to learn. “Naming it to tame it” is a major step to learning to self-regulate, which is the ultimate goal.

Citations:

- Brackett, M. (2019). Permission to Feel. Celadon Books.,
- [Collaborative for Academic, Social, and Emotional Learning \(CASEL\). \(2023\). Keeping SEL Developmental.](#)



4. Student 2 Student Sharing



What

An opportunity for students to talk about their perspective with other students and listen to the perspective of others.

How

This could be done in a “Around-The-Circle”, partners, or dialogue.

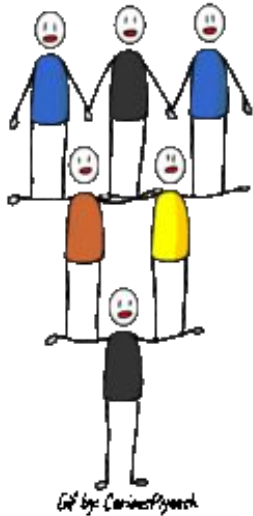
Why

This practices and reinforces thinking, speaking, and listening skills.

Citations: [Responsive Classroom. \(2014\). Sharing Leads to Learning.](#)



5. Group Activity



What

Short, low stakes activities that allow everyone to contribute at their own level

How

Students and teachers should have a repertoire of physical, intellectual, or artistic activities to choose from.

Why

This helps foster engagement around tasks that build a positive community and help students be more competent in social and emotional skills.

Citations: Responsive Classroom. (2016). Elementary Core Course Resource Book.

Morning Meeting Compass Berclair

2024-2025



COMPASS
COMMUNITY SCHOOLS



Monday



Attendance Update



COMPASS
COMMUNITY SCHOOLS

Berclair		231	19	98%
	K	25	4	96%
	1	25	5	95%
	2	25	2	98%
	3	24	0	100%
	4	25	3	97%
	5	27	0	100%
	6	26	0	100%
	7	27	4	96%
	8	27	1	99%

Greeting





How are we doing today?

MY FEELINGS



Happy



Sad



Angry



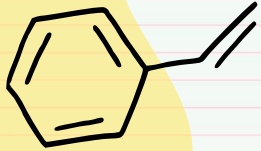
Scared



Excited



Silly



Share

What makes someone a
good friend?





Activity- Hot and Cold

Pick a scholar to leave the room. Hide an object in the classroom. When the student returns, take turns giving them clues using 'hot' (object is close by) or 'cold' (object is far away).



Good morning Compass Berclair! It's Mrs. Cowan here. Each Monday you will be getting a special morning message from me. Last week was a great week! We had over 97% attendance on most days.

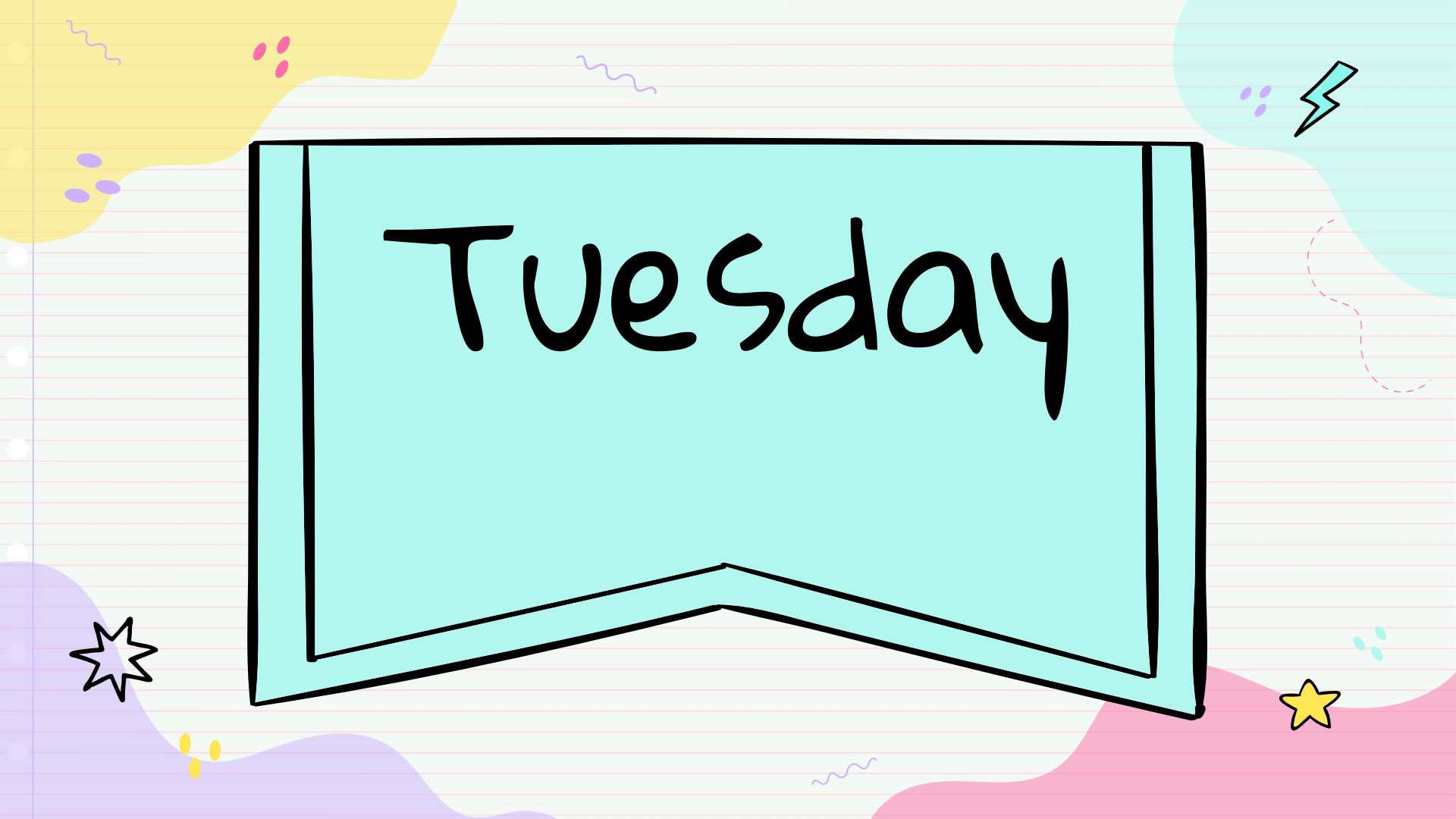
This week's focus within PAWS is PRACTICE KINDNESS. What does it mean to be kind? I went to look it up and it said: a person who is kind is generous, caring and helpful to others. Let's reflect for a minute: What is one way that we were kind last week? What is one way you want to be kind this week?

I am going to focus on being kind by making sure that all of us have what we need at lunch. We want to make sure that we have people there to support and have all our materials. That will help us all within the school!

I can't wait to see kindness all over our school this week. It makes it a better place for everyone.

Have a great week,

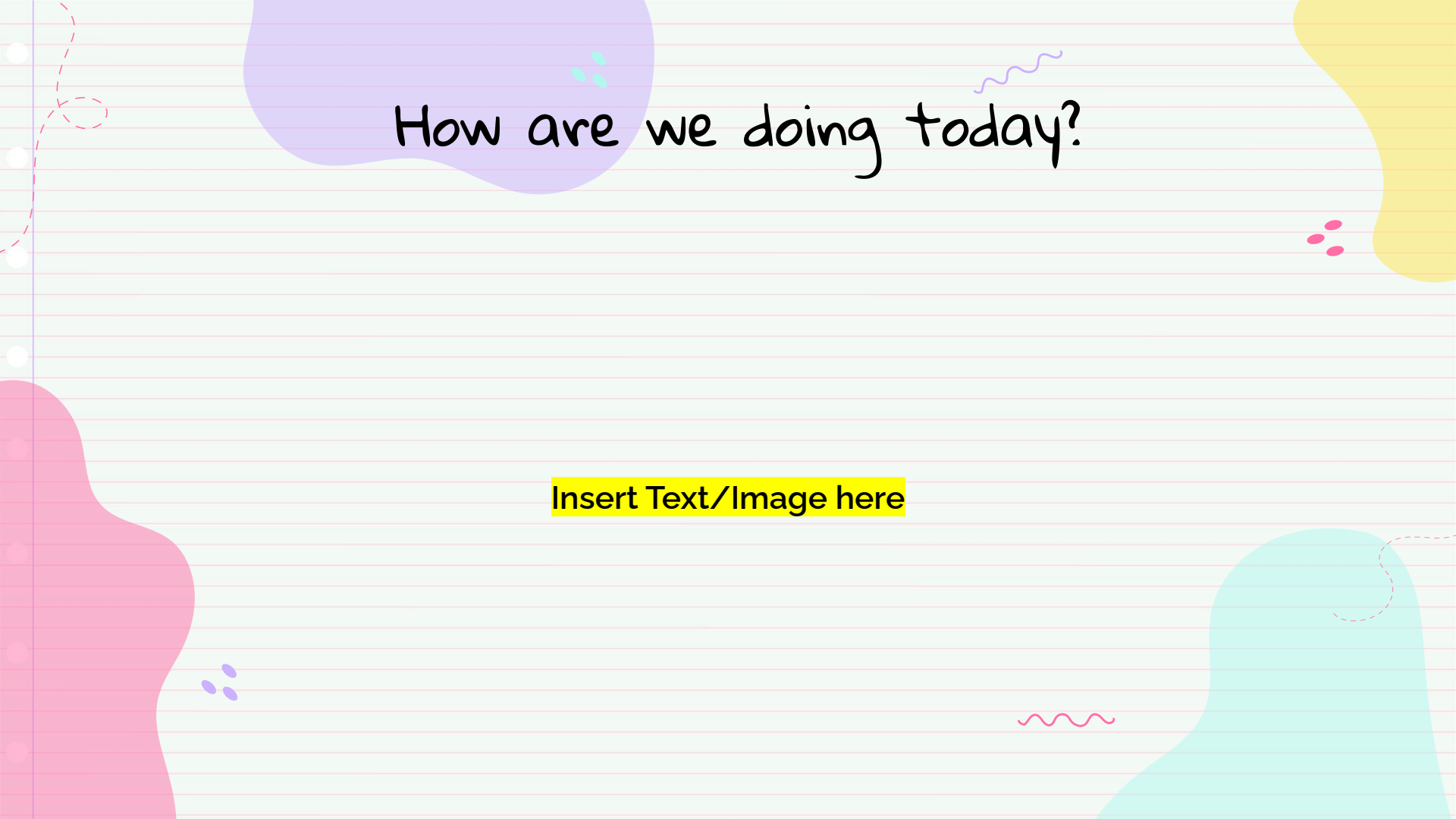
Mrs. Cowan



Tuesday

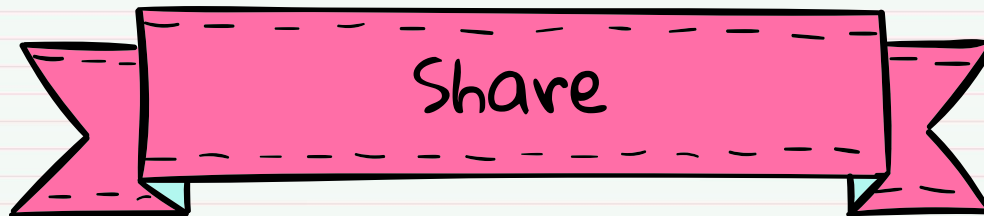
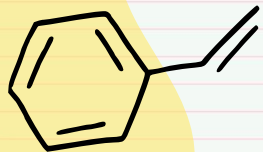


Insert Text Here



How are we doing today?

Insert Text/Image here



Insert Text Here



A pink ribbon banner with a black outline and folded ends.

Activity

A pink rectangular box with a black outline and dashed lines along the top, bottom, and sides, suggesting it is a template for a card or envelope.

Activity
Title

Directions:

Morning Message

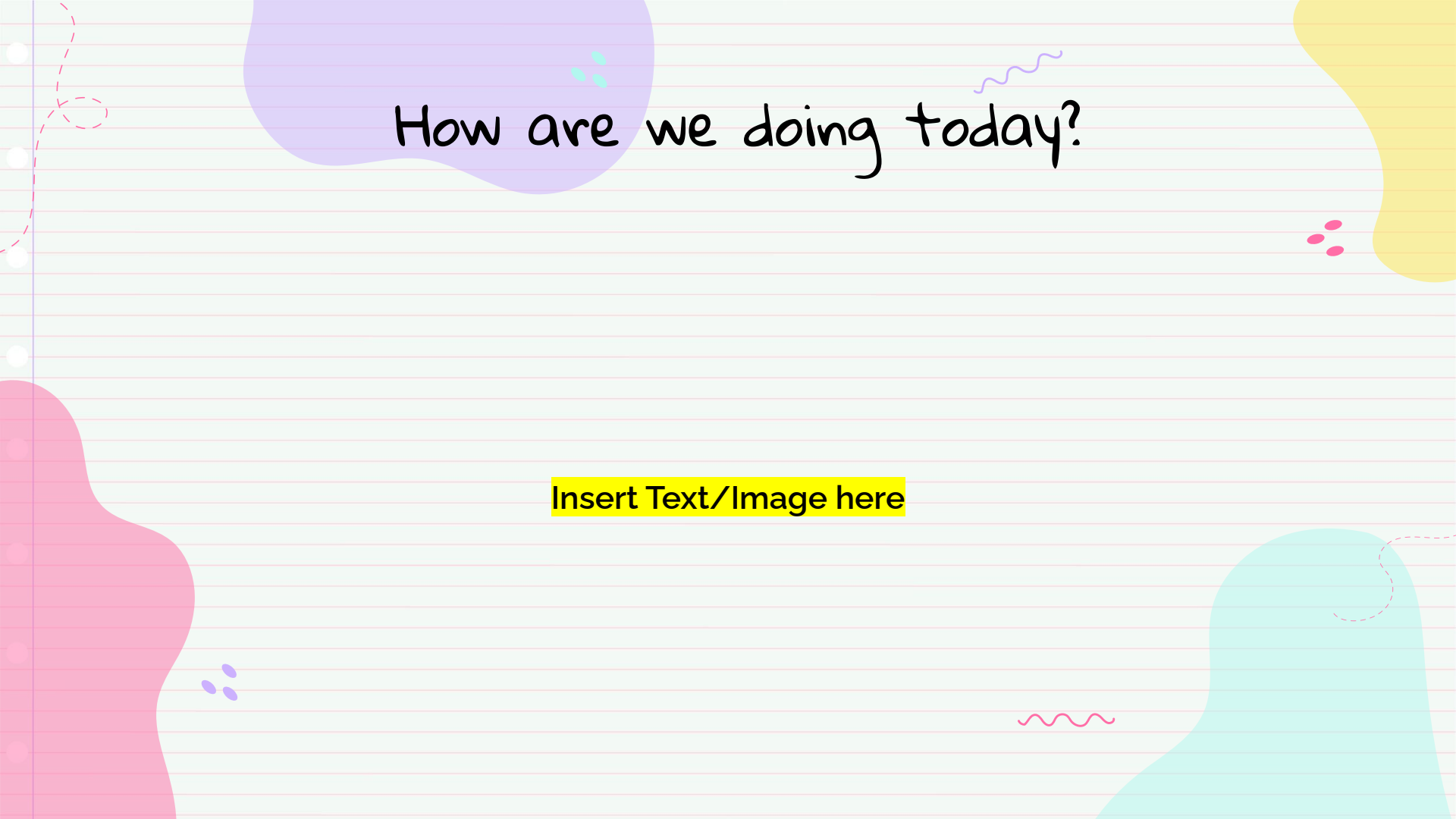




Wednesday

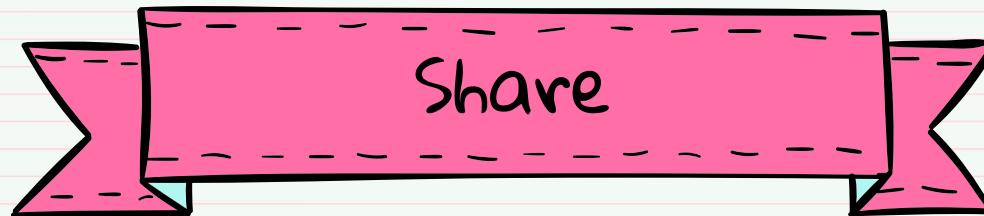
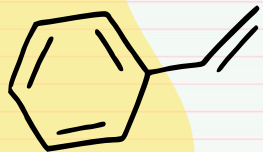


Insert Text Here



How are we doing today?

Insert Text/Image here



Insert Text Here



A pink ribbon banner with a black outline and folded ends.

Activity

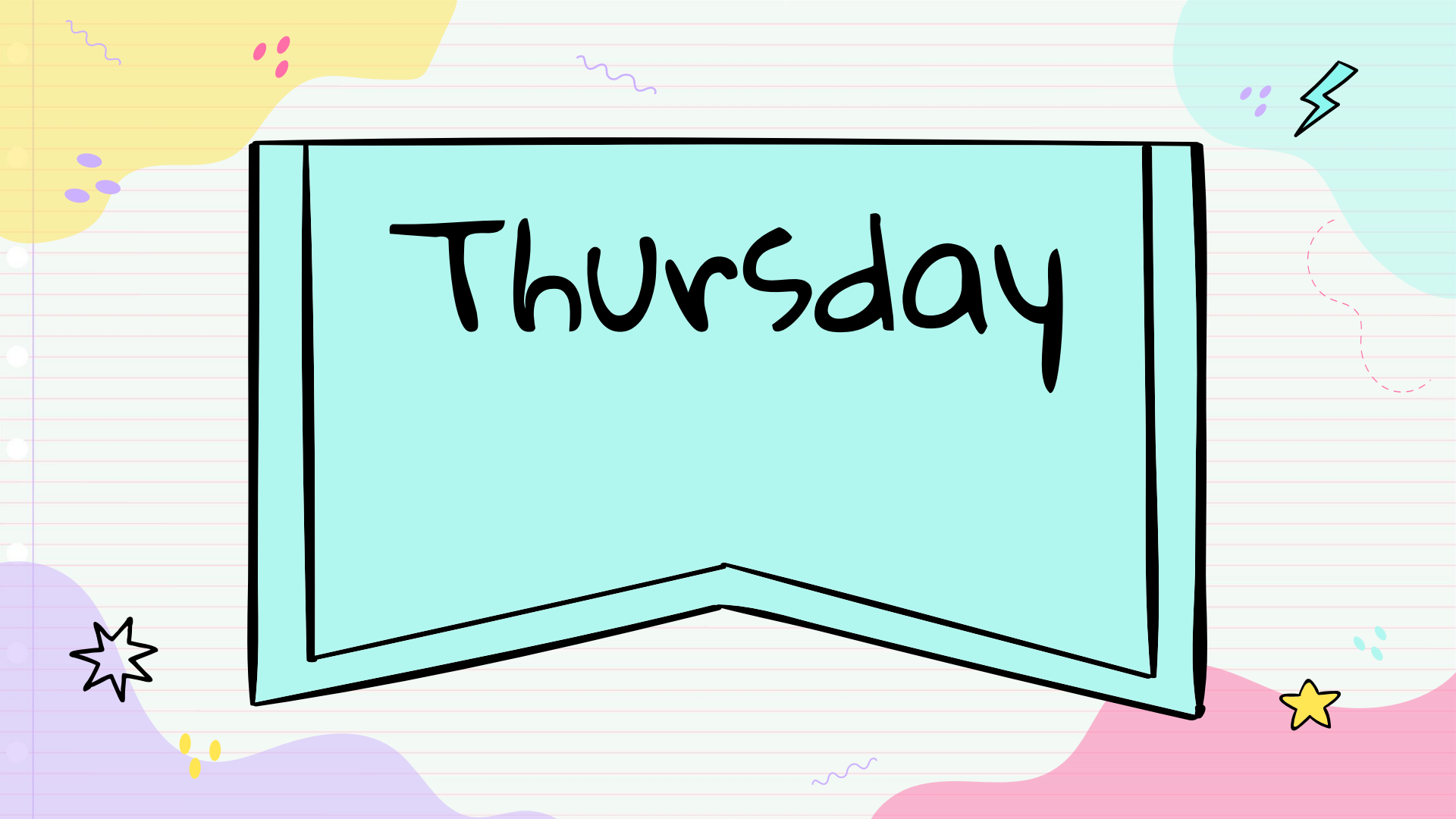
A pink rectangular card with a black outline, a dashed line along the bottom edge, and dashed lines along the left and right edges. A yellow rectangular label is pasted onto the top left.

Activity
Title

Directions:

Morning Message





Thursday

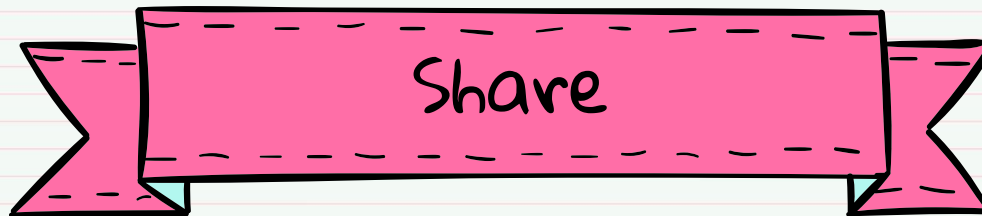


Insert Text Here



How are we doing today?

Insert Text/Image here



Insert Text Here



A pink ribbon banner with a black outline and a 3D effect, featuring a yellow shadow on the right side.

Activity

A pink rectangular card with a black outline, a dashed line along the bottom edge, and dashed lines on the left and right sides. It has a yellow rectangular label in the center.

Activity
Title

Directions:

Morning Message

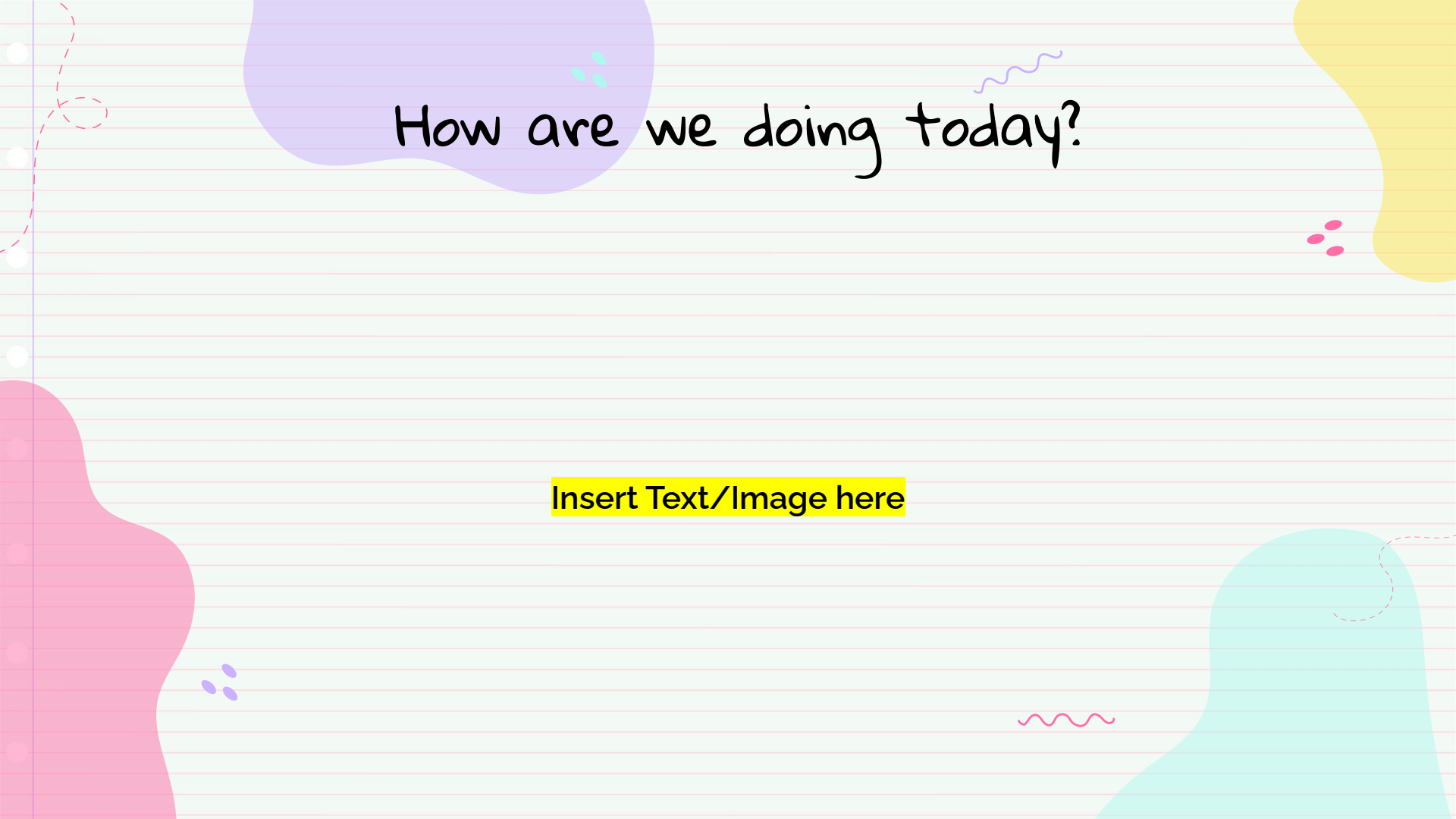




Friday

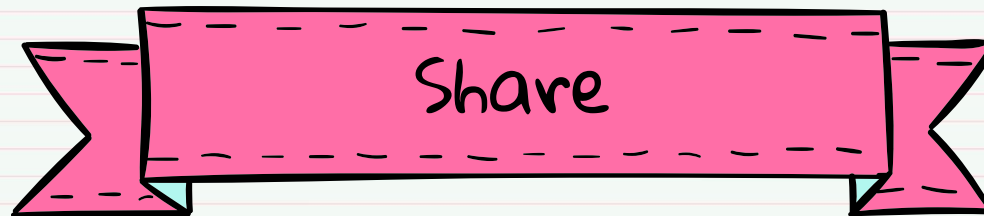


Insert Text Here



How are we doing today?

Insert Text/Image here



Insert Text Here



A pink ribbon banner with a black outline and a 3D effect, featuring a central rectangular section and two flared ends.

Activity

A pink rectangular card with a black outline, a dashed line along the bottom edge, and dashed lines on the left and right sides. It has a yellow rectangular label in the center.

Activity
Title

Directions:

Morning Message